



FIRMWARE UPGRADE INSTRUCTIONS

DANTE MODULE

M-800DT

1. DANTE FIRMWARE UPDATE MANAGER OVERVIEW

This software is mainly used for the firmware update of M-800DT devices.

*Dante® is a registered trademark of Audinate Pty Ltd.

2. OPERATING ENVIRONMENT

It works with Windows7 above.

*Windows is a trademark of Microsoft Corporation.

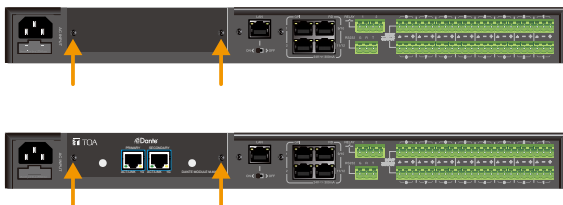
3. OPERATION INSTRUCTIONS

3.1 PREPARATION

- A set of M-8080D device
- A router
- Network cables
- Dante firmware update manager

3.2 DANTE MODULE M-800DT INSTALLATION

- Remove the 2 screws on the Dante module input port cover on the rear panel of the M-8080D and remove the cover.
- Plug the module fully into the input port by sliding them along the left and right guide rails, then secure with two screws.



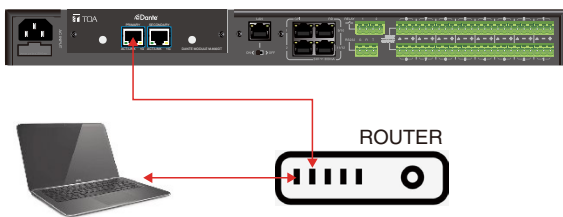
Important

Be sure to switch off the M-8080D's power when inserting or removing the module. Failure to do so may cause the module to fail.

3.3 CONNECTION

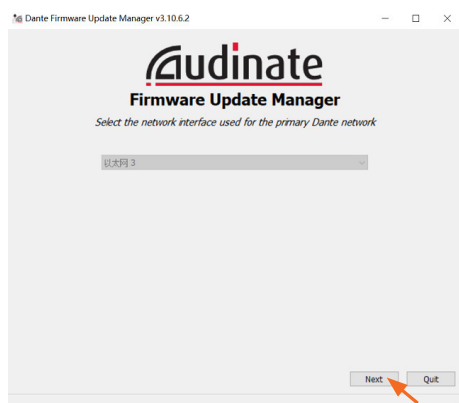
Connect the LAN port of the router to the primary port of the M-800DT device (as shown below).

The PC and the M-800DT device are connected to the same router, the router + PC should work with DHCP function.

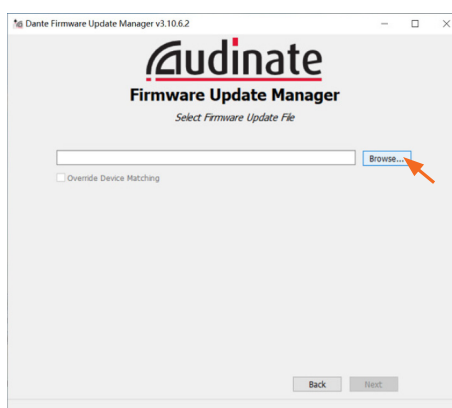
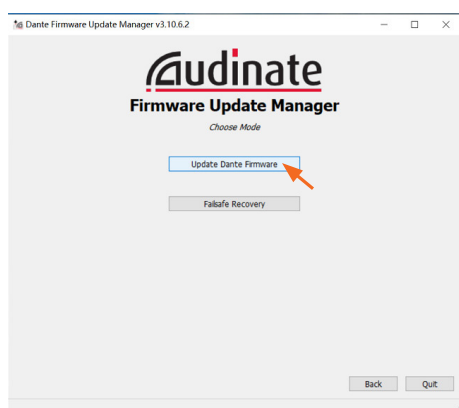


3.4 INTERFACE OPERATION

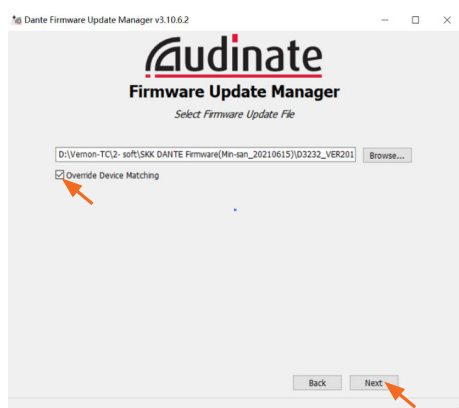
1. Install the Dante firmware update manager on your computer.
2. Start the Dante firmware update manager.



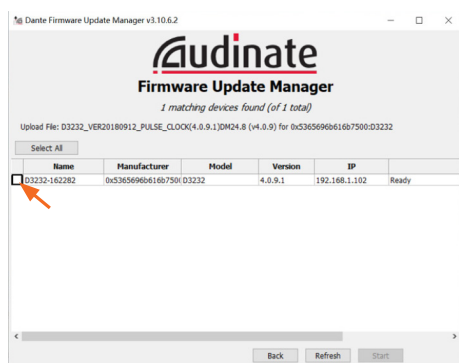
3. Select the firmware to be upgraded.



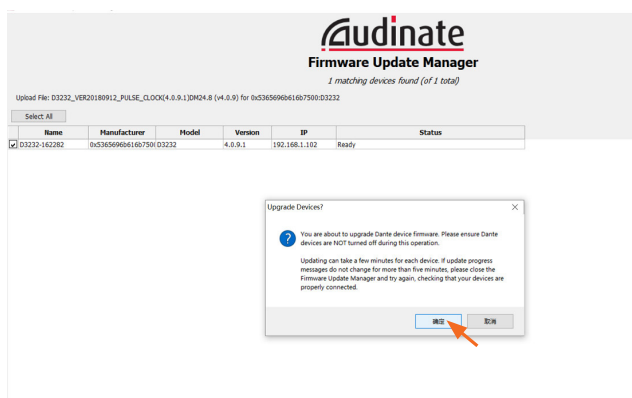
4. Select override device matching, then click Next.



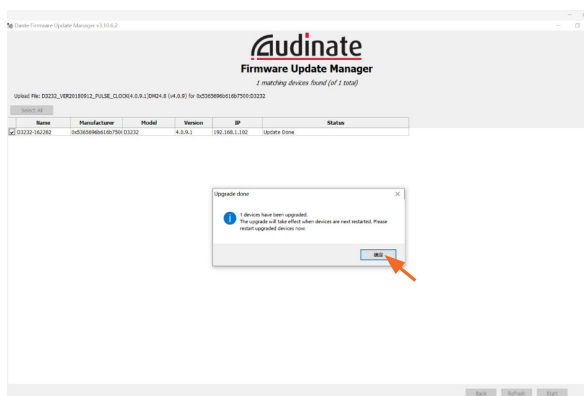
5. Select the discovered devices and click Start.



6. Click OK to start the update.



7. Click OK to reboot the device when the upgrade is complete.



Manufacturer:

TOA Corporation

7-2-1, Minatojima-Nakamachi, Chuo-ku, Kobe, Hyogo, Japan

Traceability Information for Europe

Authorized representative:

TOA Electronics Europe GmbH

Suederstrasse 282, 20537 Hamburg,
Germany

Traceability Information for Americas

Authorized representative:

TOA Electronics, Inc.

1 Harmon Plaza, Suite 700 Secaucus,
New Jersey 07094, USA
TEL: +1 650 452 1200